



Date: November 2, 2022  
To: All Bidders  
Project: West Bay Street Coastal Access Repair Project  
Subject: Addendum #3  
Sent Via: Posted at <https://www.sandcity.org/our-community/advanced-components/rfp-posts-list>

---

Bidders shall acknowledge this addendum by listing each addendum by number in his or her bid proposal by completing the Acknowledgement of Addenda form in Part II Proposal of the specifications.

Clarifications – questions submitted by bidders with responses as follows:

1. Question: Per spec section 10-3.50 Maintenance and Monitoring, "Monitoring shall occur annually in April or May for 5 years following the completion of planting". Will full retention on the project be released at the end of the project or will it be held through the entire maintenance period? Furthermore, will the performance and payment bonds for the project be tied up during this maintenance period as well?

Response: Sheet L-5.0 Planting Plan has been omitted from the landscape plans and this work is no longer a part of the project. Therefore, this spec section and the maintenance and monitoring requirements will no longer apply to this project.

2. Question: For the West Bay Coastal Access Repair Project bid, I see a planting plan sheet, but I don't see a bid item for it? Where would you like us to include that work?

Response: Sheet L-5.0 Planting Plan has been omitted from the landscape plans and this work is no longer a part of the project.

3. Question: Also, bid item descriptions for #39-#50 are missing.

Response: Bid item descriptions for bid items 39 – 50 are provided in the landscape specifications included in Part IV of the specifications. Page 14 of the specifications has been updated to include this statement.

4. Question: Bid item descriptions for items #39-50 appear to be omitted from the specs. Please provide.

Response: Bid item descriptions for bid items 39 – 50 are provided in the landscape specifications included in Part IV of the specifications. Page 14 of the specifications has been updated to include this statement.

5. Question: Bid Item #45 has a quantity of 750 LF, I don't find that amount of footage w/in the LOW.

Response: Bid item #45 has been corrected to reflect 150LF and a revised bid schedule is included with this addendum.

Revisions – Changes to Project Plans:

1. **REMOVE** sheet L-5.0 and **REPLACE** with the attached sheet L-5.0 dated 11/1/22.

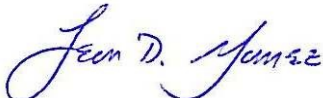
Revisions – Changes to Project Specifications:

1. **ADD** the following to Part II: Proposal - Bid Item Descriptions “**Landscape Bid Items (Bid Items No. 39-50)**. Bid item descriptions for bid items 39-50 are provided in the landscape specifications included in Part IV of this document.”
2. **ADD** Section 10.5 Clearing and Grubbing (Landscape Plans) to Part IV: Special Provisions. See attached revised Landscape Specifications.
3. **ADD** Section 10.6 Post and Cable Barriers to Part IV: Special Provisions. See attached revised Landscape Specifications.
4. **ADD** Section 10.7 Demo and Removal of Existing Pad to Part IV: Special Provisions. See attached revised Landscape Specifications.
5. **ADD** Section 10.8 4” Concrete Paving to Part IV: Special Provisions. See attached revised Landscape Specifications.
6. **ADD** Section 10.6 Thickened Edge to Part IV: Special Provisions. See attached revised Landscape Specifications.
7. **REVISE** Bid Schedule Item 45 – Post and Cable Barrier quantity of “750” with quantity of “150”. See revised Bid Schedule attached to this Addendum.

Sealed, unbound bid proposals for furnishing all labor, materials, tools, equipment and incidentals for the construction of the West Bay Street Coastal Access Repair Project in Sand City, California, in accordance with these plans and specifications, will be received until **2:00pm, Friday, November 4, 2022** (“*Bid Opening Date*”), at which time they will be publicly opened and read in the City Council Chambers.

All other conditions of the Specifications remain the same. Failure to acknowledge addendum will result in a nonresponsive bid.

Sincerely,



Leon D. Gomez, PE  
City Engineer

**Landscape Bid Items (Bit Items No. 39-50)**

Bid item descriptions for bid items 39 – 50 are provided in the landscape specifications included in Part IV of this document.

**ANCILLARY ITEMS**

Payment for any items that do not have instruction indicating where expenses for said items are to be accounted for are to be considered ancillary to the work and accounted for in every one of the lump sum or unit price items and no additional compensation will be allowed therefor.

**LUMP SUM PRICE BREAKDOWN**

Immediately after award of the contract, the contractor shall submit a cost breakdown list to the Engineer for all Lump Sum Bid items. The list shall consist of major elements of work that make up the item and shall be used for determining progress pay estimates.

**BID CLARIFICATION**

Pursuant to the provisions of the California Public Contract Code Section 20103.8, City reserves the option to award any or all the additive bid items in addition to the original contract after the lowest responsive responsible Bidder has been determined, should the City later obtain additional funding for additive alternatives not awarded with the original contract.

For responsible bidder as it pertains to this contract, see Part I, Responsible Bidder.

Unit and lump sum prices shall be for items in place, as shown on the Plans, including all labor, materials, equipment, taxes, and incidentals necessary for a complete job.

Whenever unit prices are required and there is an incorrect extension thereof, the unit price correctly extended shall prevail and the total bid shall be corrected to reflect the correct extension. If a bid item amount is zero, enter zero. If a bid item is included elsewhere, enter "included". Do not enter "N/A" into the Bid Schedule.

The foregoing quantities are approximate only, being given as a basis for comparison of bids, and the City of Sand City does not, expressly or by implication, agree that the actual amount of work will correspond therewith, but reserves the right to increase or decrease the amount of work by twenty-five percent (25%) or to omit portions of the work as may be deemed necessary by the Engineer.

Bidders may withdraw or revise their bid personally, or upon a written request, at any time prior to the hour set for the opening of bids, but not thereafter; however, the City shall not accept faxed copies of bid bonds, affidavits or any other documents where an original document or signature is required by these Specifications. Bids may not be withdrawn for the time period specified in BID VALIDITY of Part I.

The **Noncollusion Declaration** included in this document shall be executed and submitted with each bid. The **Local Hire Certification** included in this document shall be executed and submitted with each bid, except in the following cases: 1) informal bids (i.e., under \$40,000); 2) whenever a state or federal law or regulation applicable to a particular contract prohibits the provision of a local hire requirement; or 3) whenever the City, in accordance with the requirements of the City Code or state law, determines that the contract is necessary to respond to an emergency which endangers the public health, safety, or welfare; or 4) whenever the City determines that a suitable pool of persons providing specialized skills does not exist locally for a specific public works project.

**10-4.52 BOLT HOLES** - Bolt holes in wood shall be drilled 1/16" oversize. Washers shall be used in all bearing of heads and nuts against wood. Bolts, nuts and washers shall be hot dip galvanized where exposed to the weather. All nuts shall be tightened when placed and re-tightened at completion of job or immediately before finishing construction work which will make them inaccessible.

Pre-drill all holes for wood screws and/or lag bolts to 3/4 of their diameter. Lag bolts are to have standard cut washers, or the equivalent thereof, under the head. The bolts shall be taken up snug and shall be re-tightened at the latest practicable time during the construction work.

**10-4.53 FIELD TREATMENT** - Field treat all cuts, bevels, notches, re-facing and abrasions made in the field in treated poles in accordance with AWPA standards and as approved by the Engineer. Trim all cuts and abrasions before field treatment. Paint all depressions or openings around bolt holes, joints, or gaps including recesses formed by counter-boring.

**10-4.54 FIXTURES AND POLES** - Fixtures and poles shall be plumb. All scratches, dents, and other miscellaneous damage to fixtures and poles shall be repaired or replaced by the Contractor as directed by the Engineer. Poles shall be washed to remove excess preservative stains.

**10-4.55 PAYMENT** - The Contract lump sum and unit prices paid for various Wood Construction bid items will be considered full compensation for furnishing all labor and incidentals and for all work involved as specified in this Section and as shown on the Plans.

## **SECTION 10-5 CLEARING AND GRUBBING (LANDSCAPE PLANS)**

**10-5.1 DESCRIPTION OF WORK** - Furnish all labor, material, equipment, tools, and incidentals necessary for clearing and grubbing work as shown on the Drawings and as specified in this Section.

**10-5.2 DEFINITIONS** - Existing Topsoil: The top layer of existing soil in unpaved / planting areas, containing minerals and organic materials including humus, and completely free of weeds, roots, rocks/clods over one cubic inch and other objectionable material. Depth of existing topsoil shall be taken to be 2-4 inches deep on average or as determined by the Owner's Representative at the time of construction after clearing and grubbing. At unpaved / planting areas other than turf, existing topsoil starts below the mulch layer.

**10-5.3 SITE CLEARING** - General - Clear and grub only areas as necessary to construct improvements shown on the Drawings. Remove vegetation, improvements, and obstructions protruding through the ground surface and/or interfering with installation of new construction. Removal includes complete root systems. Remove all organic matter in unpaved / planting areas to be replanted, to a sufficient depth to remove such material. Replanting includes areas with mulch-only applications. The depth of removal will vary with the type and density of vegetation across the project site and with the time of year.

**10-5.4 STRIPPING** - Remove all vegetation and grass before stripping existing topsoil. Strip existing topsoil from all unpaved areas to be improved with paving.. Average depth of topsoil is specified elsewhere in this Specification. Additional topsoil may be required to be removed in localized areas to depths encountered to prevent intermingling with underlying subsoil or other waste materials. Remove all vegetation matter from collected existing topsoil and stockpile for re-use in proposed planting areas unless otherwise instructed by the Owner's Representative. See Specification Section Soil Preparation. Do not use stockpiled existing topsoil as structural fill and/or under proposed paving

**10-5.5 CLEAN-UP** - Disposal: Remove cleared & grubbed material, waste, unsuitable, and excess material from the Owner's property and dispose of legally or as directed by the Owner's Representative.

**10-5.6 MEASUREMENT AND PAYMENT** - The Contract lump sum price paid for Clearing and Grubbing shall be considered full compensation for furnishing all labor, material, equipment, tools, and incidentals, for all work involved as specified in this Section, as shown on the Drawings and as directed by the Owners Representative, and no separate payment shall be made.

## **SECTION 10-6 – POST AND CABLE BARRIERS**

**10-6.1 DESCRIPTION OF WORK** - Furnish all labor, material, equipment, tools, and incidentals necessary for the fabrication and installation of miscellaneous metalwork as shown on the Drawings and as specified in this Section. The work includes but is not limited to:

- a. Installation of galvanized anchor rod with eye loop
- b. Installation of stainless steel cable
- c. Provision of clip angles, connectors, machine bolts, lag bolts, screws, anchor bolts, and all other miscellaneous metal items not specified elsewhere.

**10-6.2 QUALITY ASSURANCE** - Coordinate with the work of other trades to ensure timely progress of the work covered under this Section. Protect the installed work and materials of other trades. Prevent galvanic action and other forms of corrosion by insulating metals and other materials from direct contact with incompatible materials. In the event of damage, immediately make all repairs and replacements necessary to the approval of the Owner's Representative and at no additional cost to the Owner.

**10-6.3 SUBMITTALS** - Submit product data for review and approval by the Engineer for all materials and accessories.

**10-6.4 METAL MATERIALS** - General: metals shall be new material, free of rust with smooth surfaces, without seam marks, roller marks, rolled trade names, stains, discolorations, or blemishes. Marine Environments: all steel at sea-front conditions – that is not stainless steel - is to be hot-dip galvanized (HDG) prior to painting or powder-coating if applicable. Structural Steel Tube shall meet ASTM A500 / ASTM A572 standards Stainless Steel shall be Grade 316 and free of rust.

**10-6.5 FASTENERS AND ADHESIVES** - General: ASTM A307. All bolts, nuts, washers and other fasteners shall be free from rust. Surface fasteners that are not countersunk shall be button-head type unless otherwise shown on the Drawings. Galvanized steel: ASTM A153 or ASTM F2329. Hot-dip galvanized fasteners suitable for exterior use. Stainless steel components: Type 316 stainless steel fasteners.

**10-6.6 INSTALLATION** - Examine work of other Sections upon which work of this Section depends. Report any unsatisfactory conditions to Owner's Representative in writing. Do not start work until unsatisfactory conditions are corrected. Set the work accurately in location, alignment, and elevation; plumb, level, true, and free of rack, measured from established lines and levels. Fit exposed connections accurately together to form tight hairline joints. Do not weld, cut, or abrade the surfaces of units which have been coated or finished after fabrication, and are intended for field connections.

**10-6.7 CLEAN-UP & REPAIR** - Clean metal work surfaces in accordance with good industry practices. Replace damaged metal work that, in opinion of the Owner's Representative, cannot be satisfactorily repaired. Clean the jobsite of excess materials.

**10-6.8 MEASUREMENT AND PAYMENT** - The Contract unit price paid for the Cable and Post Barrier shall be considered full compensation for furnishing all labor, material, equipment, tools, and incidentals, for all work involved as specified in this Section, as shown on the Drawings, and as directed by the Owner's Representative, and no separate payment shall be made.

## **SECTION 10-7 – DEMO AND REMOVAL OF EXISTING PAD**

**10-7.1 GENERAL** - Contractor shall refer to "Remove Concrete" Bid Description for description of work and measurement of payment and refer to "Remove Concrete" Technical Specifications.

**SECTION 10-8 – 4” CONCRETE PAVING**

**10-8.1 GENERAL** - Contractor shall refer to “**Minor Concrete**” Bid Descriptions for description of work and measurement of payment and refer to “**Minor Concrete**” Technical Specifications.

**SECTION 10-9 – THICKENED EDGE**

**10-9.1 GENERAL** - Contractor shall refer to “**Minor Concrete**” Bid Descriptions for description of work and measurement of payment and refer to “**Minor Concrete**” Technical Specifications.

**WEST BAY STREET COASTAL ACCESS REPAIR PROJECT**

**CITY OF SAND CITY  
PROPOSAL AND BID SCHEDULES**

To the Honorable City Council  
City of Sand City  
City Hall  
Sand City, California

The undersigned declares to have carefully examined the location of the proposed work, that the Plans and Specifications as set forth herein have been examined, and hereby proposes to furnish all materials and equipment and do all the work required to complete the said work in accordance with said Plans and Specifications for the lump sums and unit prices set forth in the following schedule:

**BASE BID SCHEDULE**

<b>Item No.</b>	<b>Item Description</b>	<b>Unit</b>	<b>Estimate d Quantity</b>	<b>Unit Cost</b>	<b>Amount</b>
1	Mobilization	LS	1		
2	Traffic Control System	LS	1		
3	Water Pollution Control Plan	LS	1		
4	CPM Schedule	LS	1		
5	Excavation Safety (Temporary Sheeting, Shoring, and Bracing)	LS	1		
6	Clearing and Grubbing	LS	1		
7	Hot Mix Asphalt (Type A)-2" Overlay	TON	32		
8	Class II Aggregate Base Material-4" Agg Base New Pavement Section	CY	32		
9	Demo and OffHaul Existing Roadway (AC and AB)	CY	49		
10	Remove Concrete (Final Pay)	SF	309		
11	Minor Concrete (Curb and Gutter)- (Final Pay)	LF	10		
12	Minor Concrete (Type A1-6 Vertical Curb per Caltrans Standard Plan A87A) -(Final Pay)	LF	116		
13	Minor Concrete (Sidewalk)-(Final Pay)	SF	30		
14	Minor Concrete (Type D-6 Rolled Curb per Caltrans Standard Plan A87A)-(Final Pay)	LF	15		
15	Minor Concrete - Valley Gutter-(Final Pay)	SF	130		
16	Minor Concrete - (Type GO Gutter Depression per Caltrans Standard Plan D73A)-(Final Pay)	SF	68		
17	Adjust Monument Cover to Grade	EA	2		
18	Adjust Sanitary Sewer Manhole Cover to Grade (SSMH)	EA	2		
19	Adjust Water Valve Cover to Grade (WV)	EA	2		
20	Adjust Utility Vault Cover to Grade	EA	1		
21	Adjust Monitoring Well Cover to Grade	EA	1		
22	Remove Existing Storm Drain Catch Basin	EA	1		
23	Remove Existing Storm Water Infiltration System	EA	1		
24	Construct Storm Drain Inlet, Type GO (Depth of 5')	EA	1		
25	Construct 15-Inch RCP Storm Drain Pipe	LF	15		
26	Construct 30" ADS Nyoplast Drain Basin	EA	1		

Item No.	Item Description	Unit	Estimated Quantity	Unit Cost	Amount
27	Construct 24-Inch HDPE Storm Drain Pipe	LF	5		
28	Construct ADS MC 3500 Underground Chambers	LS	1		
29	Connect New Storm Drain Pipe to Existing Manhole	EA	1		
30	Pavement Marking (White)	SF	85		
31	Curb Markings (Red with White Text)	SF	157		
32	Thermoplastic Traffic Stripe - Detail 43 per CA MUTCD Chapter 3	LF	358		
33	Excavation and Offhaul (Final Pay)	CY	49		
34	Removal and Replacement of Fence	LF	45		
35	Removal and Replacement of Outdoor Pet Station	EA	1		
36	Removal of Bike Post	EA	1		
37	Installation of Bike Rack	EA	1		
38	Stabilized Access - 12" Rock	CY	37		
39	Clearing and Grubbing (Landscape Plans)	SF	1020		
40	Demo and Removal of Existing Pad	SF	420		
41	4" Concrete Paving	SF	420		
42	Thickened Edge	LF	80		
43	Wood Boardwalk	SF	190		
44	Decorative Paving Element	LS	1		
45	Post and Cable Barrier	LF	150		
46	Not Used				
47	Not Used				
48	Boulders	EA	17		
49	Interpretive Signs	EA	1		
50	Bench	EA	2		

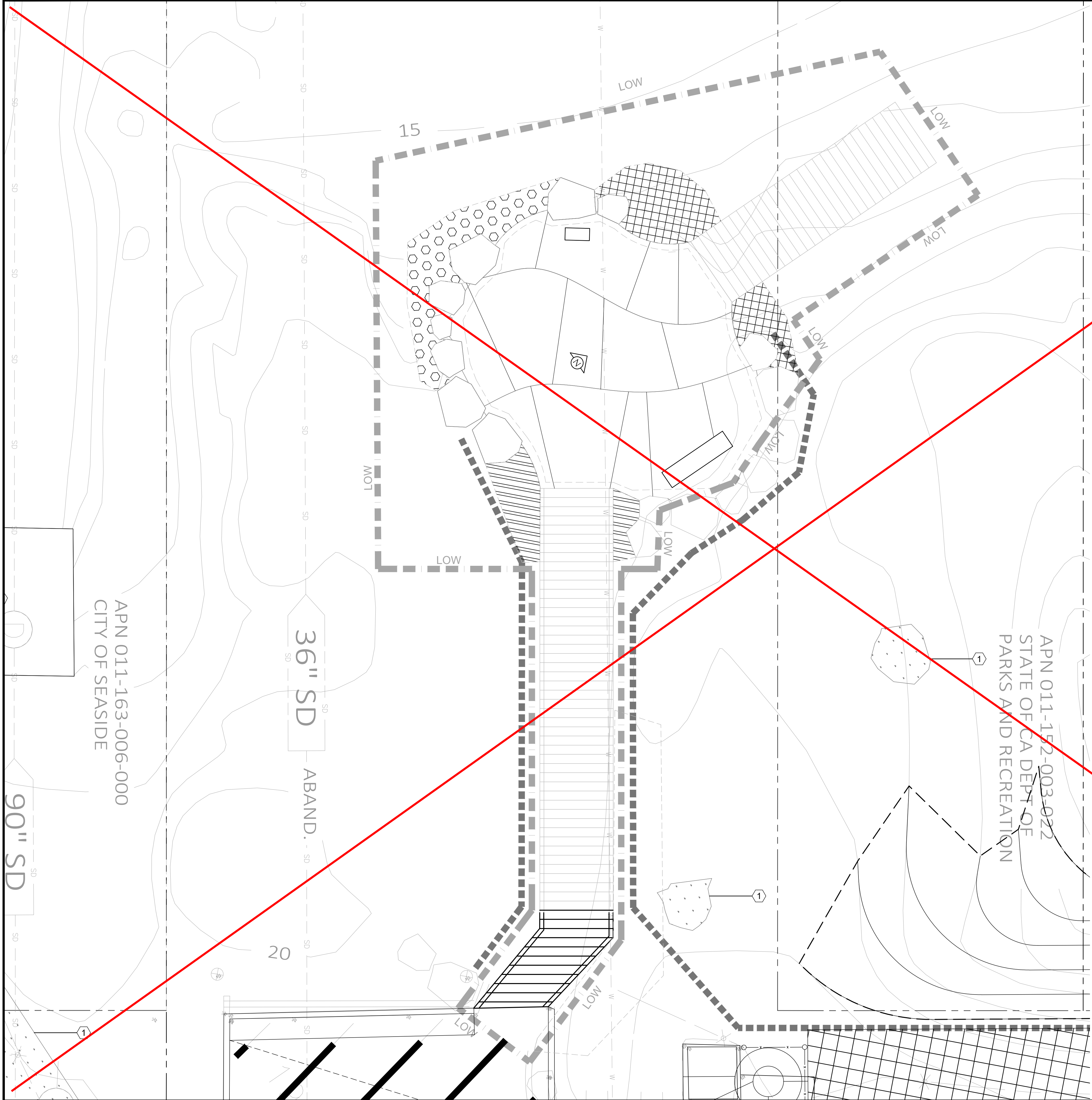
**Total Base Bid Amount \$** \_\_\_\_\_

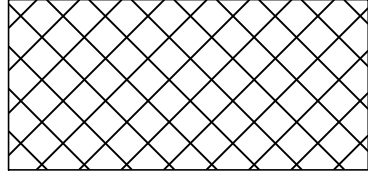
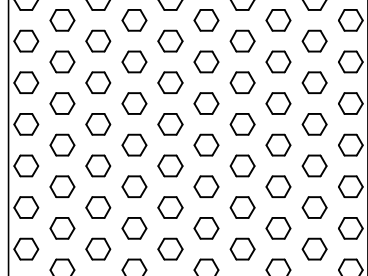
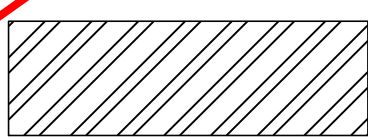
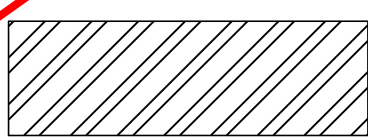
**Total Base Bid Amount in Words:** \_\_\_\_\_

**BASIS OF AWARD**

Award of contract, if any be made, shall be made to the Contractor with the lowest responsive responsible bid based on the Total Base Bid Schedule (items 1 through 50).





Plant Legend			
West Bay Ave, Sand City			
Native Species	Species	# of seedlings	
Scientific Name	Common Name	% of total	12" on center
<b>Foredune</b>			
 <i>Abronia latifolia</i>	yellow sand verbena	14	21
<i>Ambrosia chamissonis</i>	beach burr	14	21
<i>Leymus mollis</i>	American dune grass	14	21
<b>Mid/Rear Dune</b>			
 <i>Chorizanthe pungens</i> var. <i>pungens</i>	Mon. spineflower	3	5
<i>Ericameria ericoides</i>	mock heather	3	5
<i>Eriogonum parvifolium</i>	dune buckwheat	5	8
<i>Eriophyllum scheuchadifolium</i>	lizardtail	4	6
<i>Lupinus chamissonis</i>	silver beach lupine	3	5
<b>Throughout</b>			
 <i>Artemisia pycnocephala</i>	sagewort	6	9
<i>Astragalus nuttallii</i>	rattleweed	4	6
<i>Lessingia filaginifolia</i>	CA. beach aster	3	5
<i>Poa douglasii</i>	sand dune bluegrass	5	8
<b>Along Pathways</b>			
 <i>Armeria maritima</i>	sea thrift	11	17
<i>Erigeron glaucus</i>	seaside daisy	11	17
<b>Total</b>		<b>100</b>	<b>154</b>

**LEGEND**

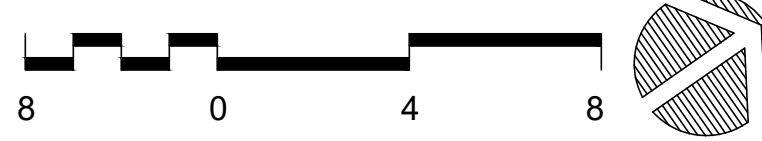
 LOW  Limit of Work Line

**REFERENCE NOTES**

- 1 Smith's Blue Butterfly Habitat Area Shall be Flagged and Avoided During Construction Biological Resources Report for West Bay Street Infrastructure Repair Project, Sand City, CA, Prepared by Denise Duffy & Associates, INC., Dated December 16, 2020. Keep the LOW Min. 3' Away from The Protected Plants.

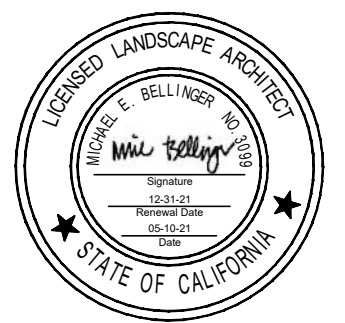
**GENERAL NOTES**

- 1. Plant quantities allow for planting on 3 foot centers, however plant spacing and location vary according to species dune topography and the presence of dead iceplant. All plantings to be supervised by the Engineer (Restoration Biologist).
- 2. Sand Stabilization: Hand-sized bunches of sterile straw shall be punched vertically in the sand to a depth of 3" -12" to 18" o.c. in areas without dead ice plant.



NO.	DATE	INITIAL	DESCRIPTION

**Harris & Associates**  
 450 Lincoln Avenue, suite 103, Salinas, CA 93901  
 p: 831.233.9242 \* WeAreHarris.com



**CITY OF SAND CITY**  
 ADDRESS: 1 PENDERGRASS WAY, SAND CITY, CA 93955  
 PROJECT TITLE: WEST BAY ST. COASTAL ACCESS REPAIR PROJECT  
 SHEET DESCRIPTION: **Planting Plan**

DESIGNED BY: MB  
 DATE: 11/01/2022  
 SCALE: 1/8" = 1'-0"  
 PROJECT NO. 20.014  
 DRAWING NO. **L-5.0 OMIT**  
 SHEET 15 OF 15

F:\PRODUCTION\Projects\2020\20.014\CAD\20014\_05 Planting.dwg 3/14/2022